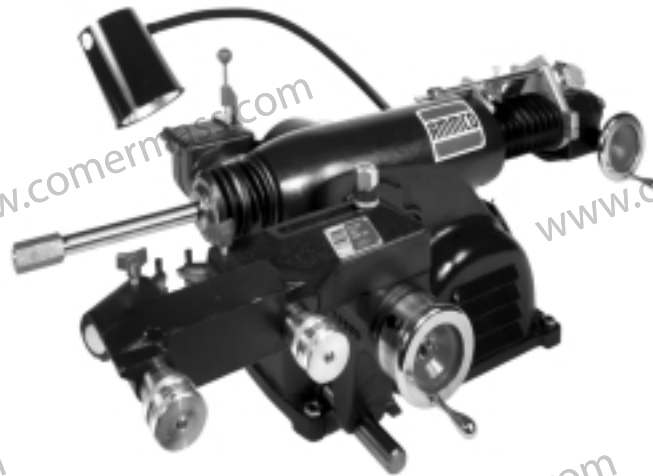




3000, 4000,
4100, 7500,
7700

Drum & Disc
Brake Lathes



Parts Identification

READ these instructions before placing unit in service. KEEP these and other materials delivered with the unit in a binder near the machine for ease of reference by supervisors and operators.

Parts Identification

Table of Contents

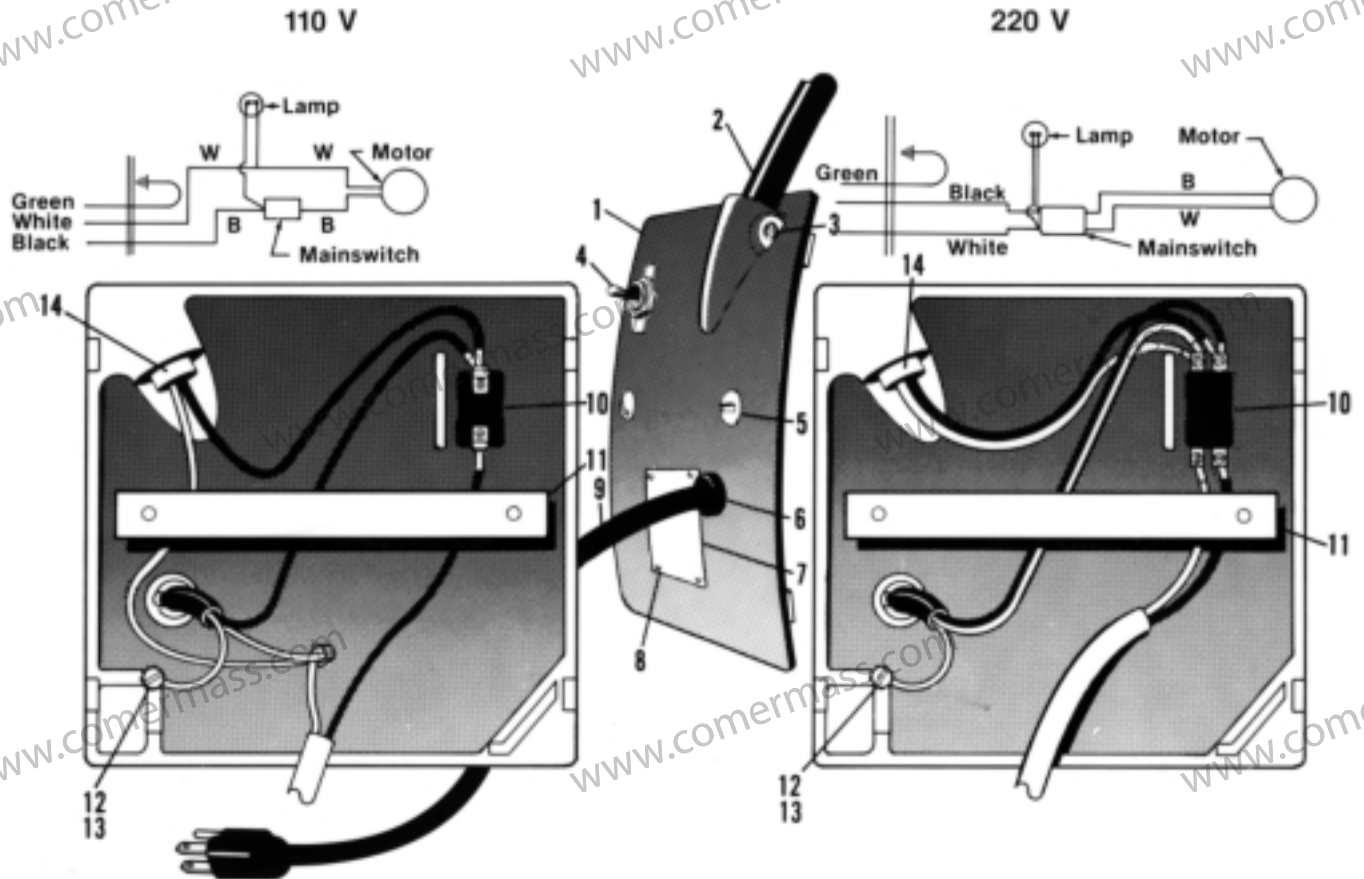
Electrical Panel Assembly	3
Main Frame Assembly Spindle—3000, 4000, 4100, & 7700	4 - 5
Variable Drum Feed Gearbox Assembly 3037-B	6 - 7
Motor Mount and Drive Shaft	8 - 9
Disc Brake Feed Mechanism 7751-B	10 - 11
6950 Twin Cutter	12
7900 Twin Cutter & Safety Shield	13
Crossfeed Assembly	14
Spindle—7500	15

Parts Identification

The following pages include full parts breakdowns with exploded view illustrations to help with ordering replacement or spare parts. Assemblies are noted where it is recommended that individual parts not be ordered separately. These parts are available only as assemblies because some parts are staked, pinned, or press fitted, then drilled, machined, or bored. Close tolerances must be maintained in assembly. Every effort is made to supply accurate exploded views, however, due to interim changes in manufacturing operations, some units may not be exactly as illustrated.

Parts Identification

Electrical Panel Assembly

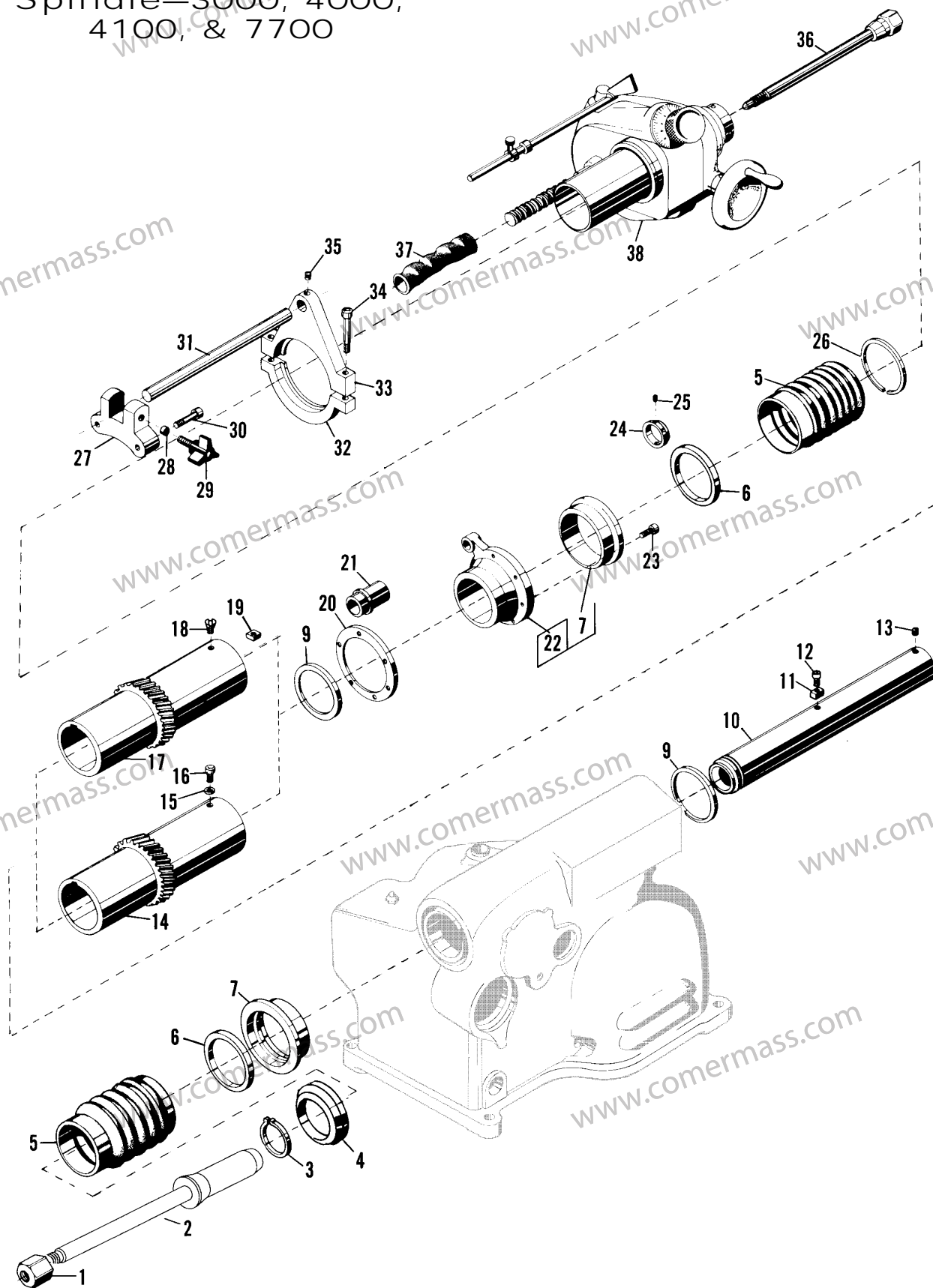


Item	Qty	Description
1	1	Panel, Electrical
2	1	Lamp
*		Replacement Lamp Switch & Sprocket
*		Replacement Dust Boot for Lamp
3	1	Set Screw
4	1	Switch, Plate
5	2	Screw, Round Head Machine
6	1	Grip, Cord, 110 V
	1	Grip, Cord, 220 V
7	1	Plate, Electrical Caution
8	4	Screw, Drive
9	1	Cord, Set, 110 V
	1	Cord, Set, 220 V
10	1	Switch, 110 V
	1	Switch, 220 V
11	1	Strap, Clamp
12	1	Screw, Self-tapping
13	1	Washer, Lock
14	1	Bushing, Insulation

* not shown

Parts Identification

Main Frame Assembly Spindle—3000, 4000, 4100, & 7700

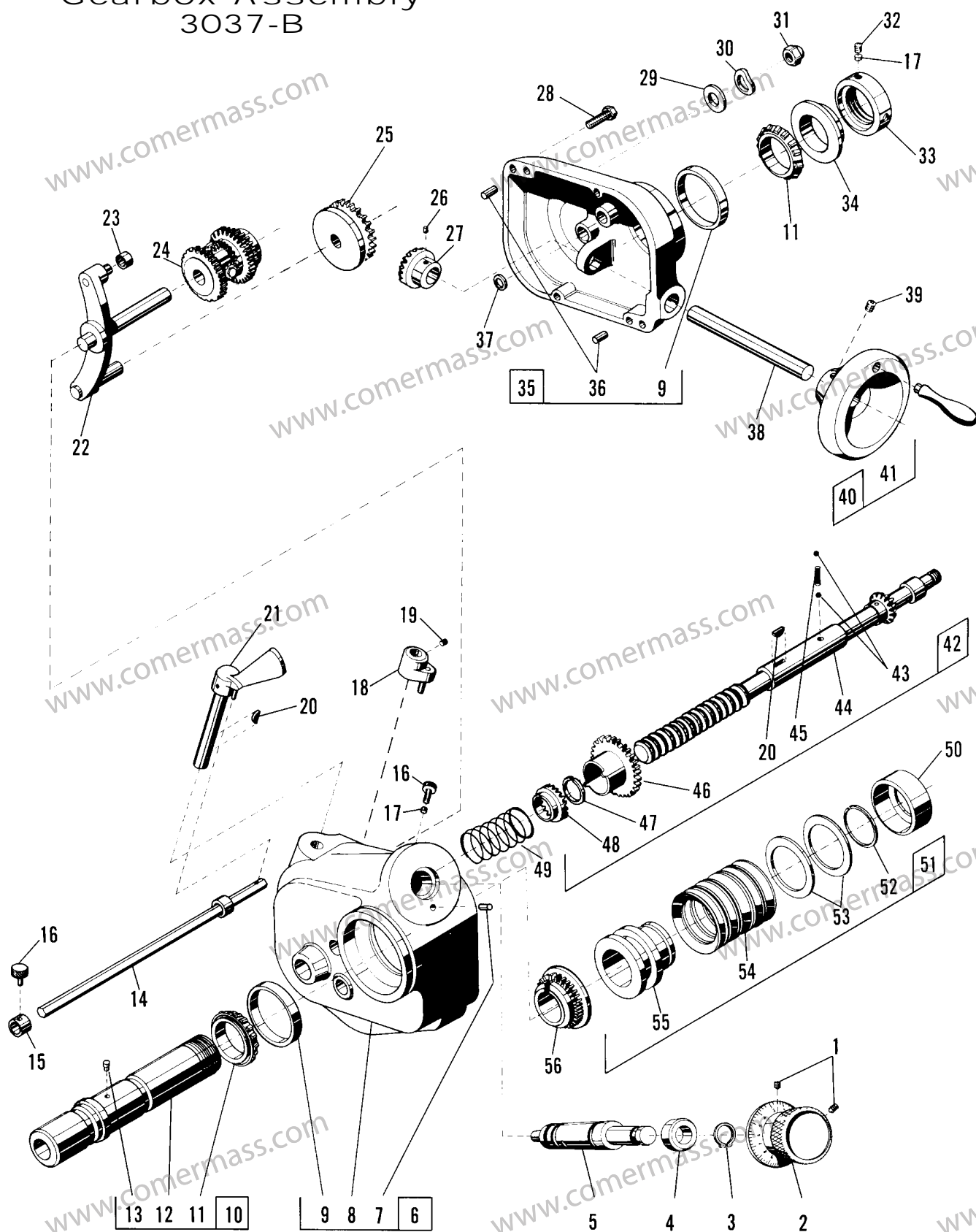


Parts Identification

Item	Qty	Description
1	1	Nut, Arbor
2	1	Arbor
3	1	Ring, Retaining
4	1	Ring, Adapter
5	2	Boot
6	1	Seal, Oil
6A	1	Seal, Oil, DBL Lip
7	2	Ring, Oil Seal Adapter
9	2	Washer, Thrust
10	1	Spindle Body, 3000/4000
	1	Spindle Body, 4100/7700
11	1	Key, Drive
12	1	Screw, Socket Head Cap
13	1	Screw, Cuppoint Set
14	1	Quill, Drive, 3000/4000
15	1	Washer, Lock, 3000/4000
16	1	Screw, Hex Hd. Cap, 3000/4000
17	1	Quill, Drive, 4100/7700
18	1	Screw, Flat Hd., 4100/7700
19	1	Block, Keyway, 4100/7700
20	*	Shim (* Quantity As Required)
21	1	Nut, Lead Screw, 4000/7000
	1	Nut, Lead Screw, 4100/7700
22	1	Rear Flange Assy., 3000/4000
	1	Rear Flange Assy., 4100/7700
23	6	Screw, Skt. Hd. Cap, 3000/7700
	4	Screw, Skt. Hd. Cap, 4000,4100
24	1	Nut, Take Up
25	1	Screw, Skt. Hd. Set
26	1	Ring, Boot, 4000/4100
	1	Spring, Boot, 3000/7700
27	1	Clamp, Front
28	1	Plug, Brass
29	1	Knob
30	2	Screw, Skt. Hd. Cap, 4000/4100
31	1	Rod, Lock, 4000
	1	Rod, Lock, 4100
32	1	Clamp, Rear, Lower
33	1	Clamp, Rear, Upper
34	2	Screw, Skt. Hd. Cap
35	1	Screw, Set
36	1	Drawbar & Nut Assy, 3000/4000
	1	Drawbar & Nut Assy, 4100/7700
37	1	Boot & Spring, 3000/4000
	1	Boot & Spring, 4100, 7700
38	1	Feed Mechanism, 3000/4000
	1	Feed Mechanism, 4100/7700

Parts Identification

Variable Drum Feed Gearbox Assembly 3037-B



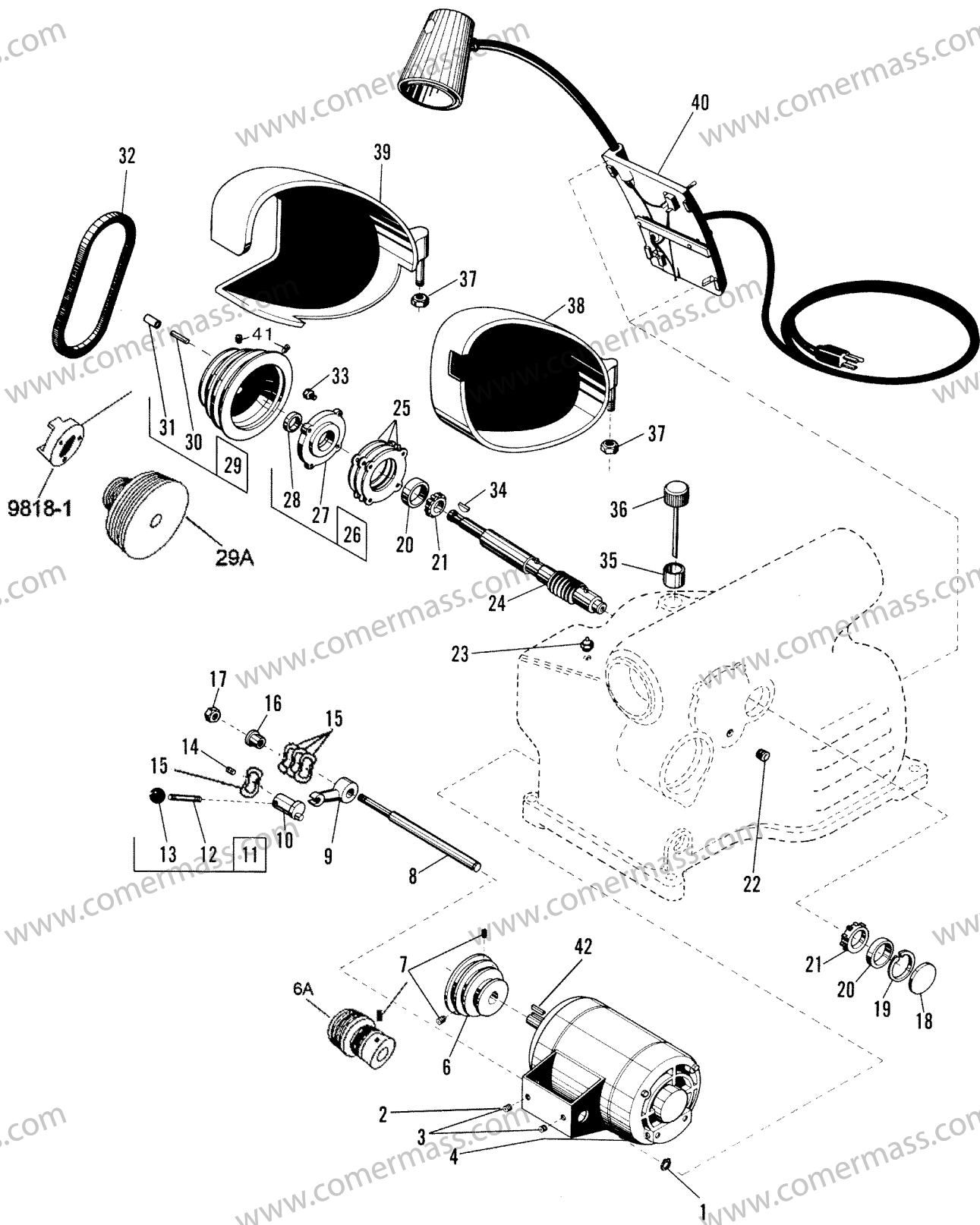
Parts Identification

Item	Qty	Description	Item	Qty	Description
1	2	Screw, Allen Set	31	1	Nut, Stop
2	1	Feed Dial Assembly	32	1	Screw, Allen Set
3	1	Ring, Retaining	33	1	Nut, Bearing Lock
4	1	Bearing, Thrust	34	1	Washer, Spherical
5	1	Screw, Feed Adjusting	35	1	Gear Case Cover Assembly
6	1	Gear Case Assembly	36	2	Pin, Dowel
7	1	Pin, Groove	37	1	Washer, Bone Fiber
8	1	Gear Case	38	1	Shaft
9	1	Cup, Bearing	39	1	Screw, Set
10	1	Spindle Extension Assembly	*40	1	Handwheel Assembly
11	1	Bearing, Taper Roller	41	1	Handle, Crank
12	1	Spindle Extension	42	1	Lead Screw and Clutch Assembly 3000/4000
13	1	Pin, Groove			Lead Screw and Clutch Assembly 4100/7500/7700
14	1	Shut-Off Assy, 3000/4000		1	Ball, Steel
	1	Shut-Off Assy, 4100/7500/7700	43	2	Lead Screw/Miter Gear Assembly 3000/4000
15	1	Collar, Stop	*44	1	Lead Screw/Miter Gear Assembly 4100/7500/7700
16	2	Screw, Knurled			Spring, Clutch
17	2	Plug, Brass	45	1	Gear, Sliding Clutch
*18	1	Clutch Shifter Assembly	46	1	Ring, Retaining
19	1	Screw, Allen Set	47	1	Clutch Jaw
20	2	Key, Hy-Pro	48	1	Spring, Coil
*21	1	Clutch Handle And Shaft Assy.	49	1	Cup, Spring Loading
*22	1	Feed Control Lever and Differential Assembly	50	1	Friction Disc Assy.
23	1	Roller	51	1	Ring, Retaining
24	1	Pinion Bushing Assy.	52	1	Washer
*25	1	Driven Friction Disc and Bearing Assembly	53	2	Spring, Belleville
26	1	Screw, Dog Point Set	54	10	Disc, Sliding Friction
27	1	Gear, Miter	55	1	Clutch, Fixed Friction
28	4	Screw, Socket Hd. Cap	56	1	
29	4	Washer			
30	1	Washer, Wave			

*Sold as assembly only.

Parts Identification

Motor Mount and Drive Shaft



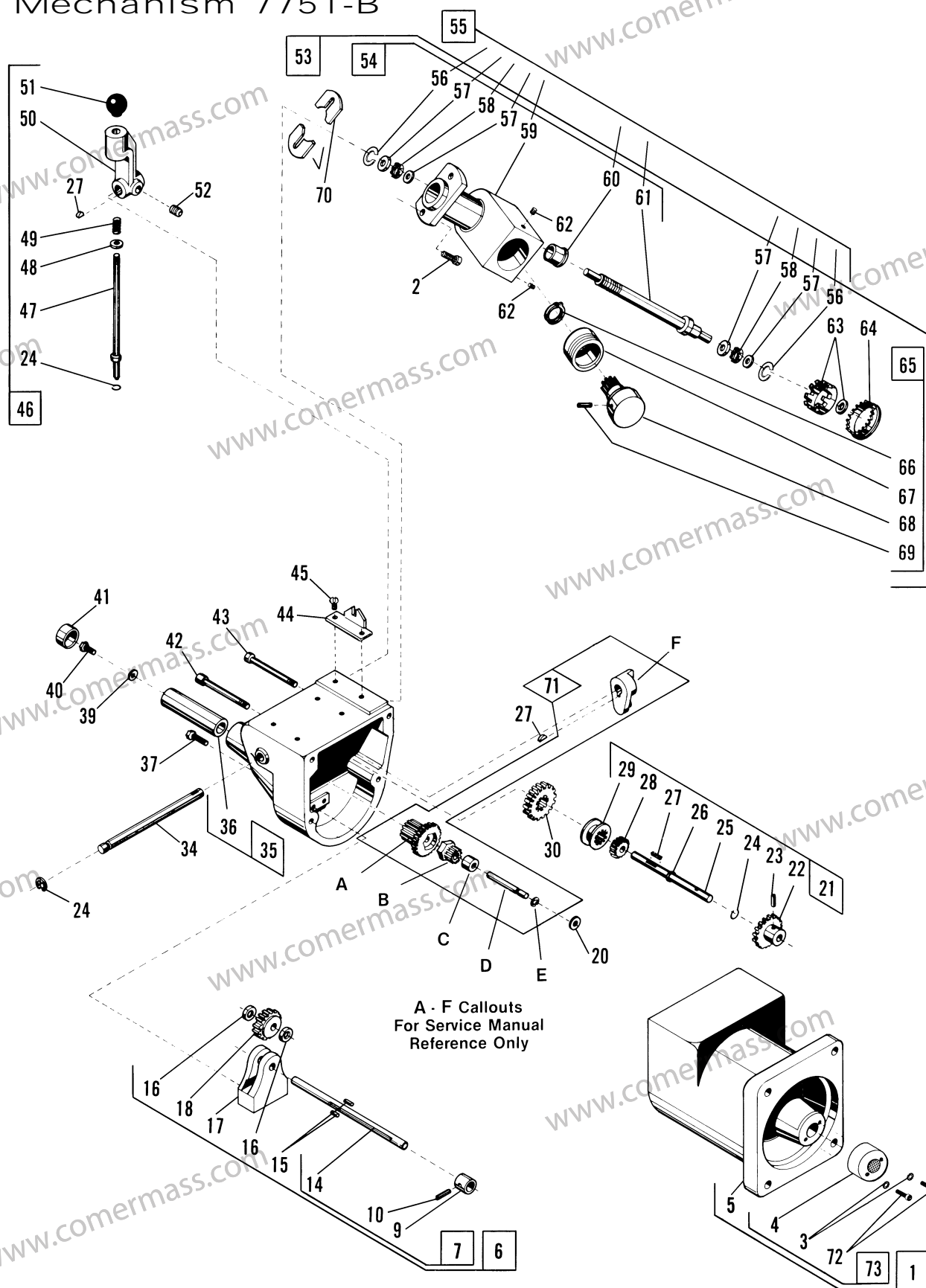
Parts Identification

Item	Qty	Description
1	1	O-Ring
2	2	Screw, Hex Hd. Cap
3	2	Washer, Lock
4	1	Motor/Bracket Assy.
6	1	Pulley, Drive, 3000/4000**
	1	Pulley, Drive, 4100/7700**
6A	1	Pulley, Drive, Poly-V-Belt**
7	4	Set Screw, 3000/4000/7500**
	2	Set Screw, 4100/7700**
8	1	Shaft, Motor Mount
9	1	Lever, Belt Tension
10	1	Pin, Eccentric Belt Release
11	1	Lever Belt Release Assy.
12	1	Handle, Belt Release
13	1	Knob, Ball
14	1	Screw, Socket Hd.
15	*	Washer, Wave (*Qty As Required)
16	1	Bushing, Motor Mount Shaft
17	1	Nut, Hex
18	1	Plug, Welch
19	1	Ring, Retaining I.D.
20	2	Cup, Bearing
21	2	Bearing, Cone
22	1	Plug, Allen Pipe
23	1	Fitting, Grease
24	1	Shaft, Worm W/Woodruff Keyway
	1	Shaft, Worm W/Square Keyway
25	*	Shim, 0.005" (*Qty As Required)
	*	Shim, 0.007" (*Qty As Required)
	*	Shim, 0.020" (*Qty As Required)
26	1	Cap And Seal Assy.
27	1	Cap, Bearing Seal
28	1	Seal, Oil
29	1	Pulley W/Pin And Tube
29A	1	Pulley W/Pin And Tube, Poly-V-Belt
30	1	Pin, Groove, 4000/4100
31	1	Tube, Rubber, 4000/4100
32	1	V-Belt, 3000,4000
	1	V-Belt, 4100/7700
	1	Poly V-Belt,
33	1	Screw, Hex Hd. Cap
34	1	Key, Woodruff
	1	Key, Square
35	1	Sleeve, Oil Filler
36	1	Dipstick
37	1	Nut, Self-Locking
38	1	Guard, Belt, 3000/7700
39	1	Guard, Belt, 4000/4100/7500
40	1	Panel Assy., Electrical
41	2	Screw, Set
42	1	Key, Square
*	1	Kit, Poly-V-Belt

** The parts listed are for models manufactured prior to late 1996. Models manufactured from late 1996 use a 2-groove pulley and poly V-belt. Check your unit to see if it uses the original 3-groove pulley and standard V-belt (the part numbers provided), or the newer 2-groove pulley and poly V-belt (part numbers listed for 7500). Order the pulley, set screw, and V-belt that matches your unit.

Parts Identification

Disc Brake Feed Mechanism 7751-B



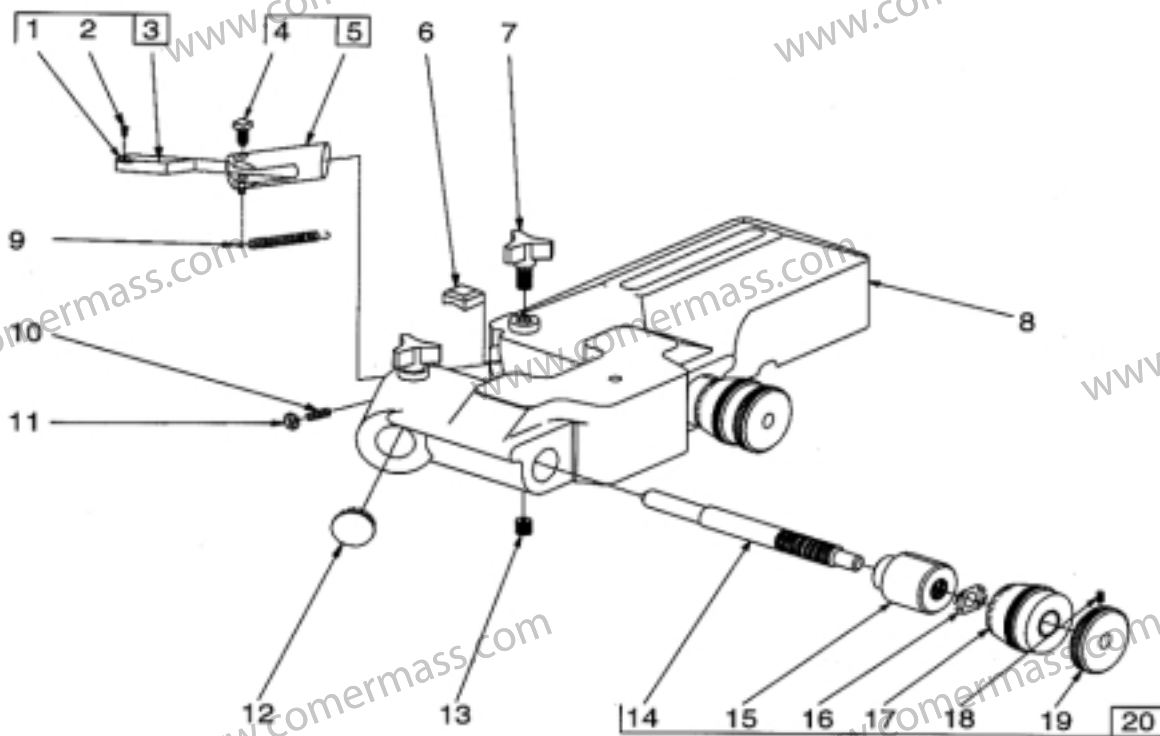
Parts Identification

Item	Qty	Description	Item	Qty	Description
1	1	Gear Case Assembly	46	1	Shifter Handle Assy.
2	4	Screw, Socket Head	47	1	Pin, Shifter Handle
3	2	Washer, Lock	48	1	Washer
5	1	Case, Gear	49	1	Spring
4	1		50	1	Body, Shifter Handle
*6	1	Drive Rod and Coupling Assy.	51	1	Knob, Ball
*7	1	Universal Coupling Assy.	52	1	Screw, Set
*9	1	Coupler	53	1	Driven Assy., Right Angle Drive
*10	1	Pin, Roll	54	1	Worm Drive Assy.
14	1	Rod, Drive	*55	1	Worm Shaft Repair Kit
15	2	Pin, Dowel	*56	1	C Clip
16	2	Washer, Thrust	*57	2	Washer, Travel
17	1	Trap	58	1	Bearing, Needle Thrust
18	1	Gear, Drive	59	1	Housing, Drive
20	1	Washer, Bone Shim	60	1	Bushing, Oilite
21	1	Shifter Shaft Assy.	*61	1	Worm Drive Assy.
22	1	Gear, Helix	62	2	Screw, Cone Point Set
23	1	Pin, Roll	63	1	Shear Gear And Ring Assy.
24	2	Ring, Retaining	64	1	Plug, Dot
25	1	Shaft, Clutch	65	1	Coupling Assy.
26	1	Ring, Retaining	66	1	Ring, Retaining
27	5	Key, Woodruff	67	1	Spacer And Bushing Assy.
28	1	Gear, Fine Feed	68	1	Coupling And Gear Assy.
29	1	Clutch	69	1	Pin, Roll
30	1	Gear, Coarse Feed	70	2	Shim, 0.005"
34	1	Shaft, Shift		2	Shim, 0.010"
35	1	Gear Case Cover and Tube Assy.		2	Shim, 0.020"
36	1	Tube		2	Shim, 0.030"
37	2	Screw, Socket Hd. Cap	71	1	Shifter & Intermediate Gear Assy.
39	1	Washer	72	2	Screw, Cap
40	1	Screw, Socket Hd. Cap	73	1	Lead Screw Nut Kit
41	1	Cap, Tube			
42	2	Screw, Hex Hd. Machine			
43	2	Screw, Hex Hd. Machine			
44	1	Plate, Index			
45	2	Screw, Round Hd. Machine			

*Sold as assembly only.

Parts Identification

6950 Twin Cutter



Item	Qty	Description
*1	2	Carbide Insert, Positive Rake
**	2	Carbide Insert, Negative Rake
2	2	Screw, #4-40 X .25 Oval Head
*3	1	Holder, Tool Bit, RH, Positive Rake
*	1	Holder, Tool Bit, LH, Positive Rake
**	1	Holder, Tool Bit, RH, Neg. Rake
**	1	Holder, Tool Bit, LH, Neg. Rake
4	2	Screw, Square Head Set
5	1	Tool Holder, Left Hand
	1	Tool Holder, Right Hand
6	2	Gib, Brass, Tool Holder
7	1	Screw, Lock
8	1	Twin Cutter Housing
9	1	Spring
10	2	Screw, Locating
11	2	Nut, Hex
12	2	Plug, Dot

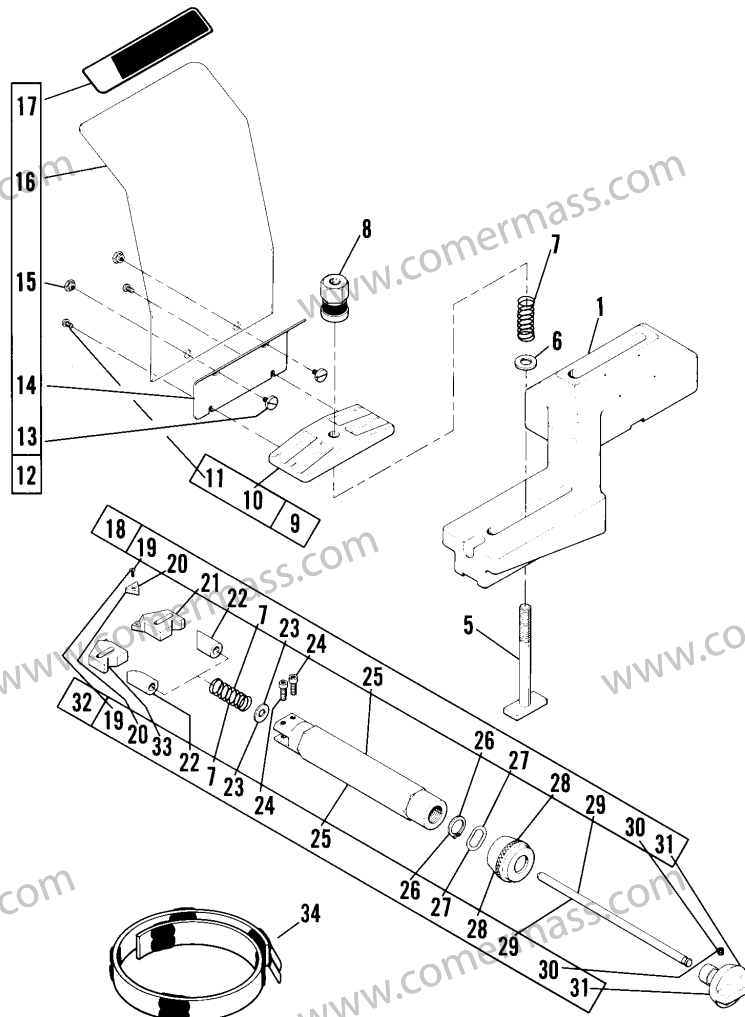
Item	Qty	Description
13	2	Screw, 3/16-16 Set
14	2	Rod, Dial
15	2	Plug, Dial
16	2	Washer, Spring
17	2	Dial, Micrometer
18	2	Screw, Set
19	2	Knob, Dial Rod
20	1	Dial Assembly

Note: These parts are not included with the 6950 Twin Cutter tool.

For a complete assembly, order one of the following:
 *28800 twin cutter with positive rake tool holders and bits.
 **29800 twin cutter with negative rake tool holders and bits.

Parts Identification

7900 Twin Cutter & Safety Shield



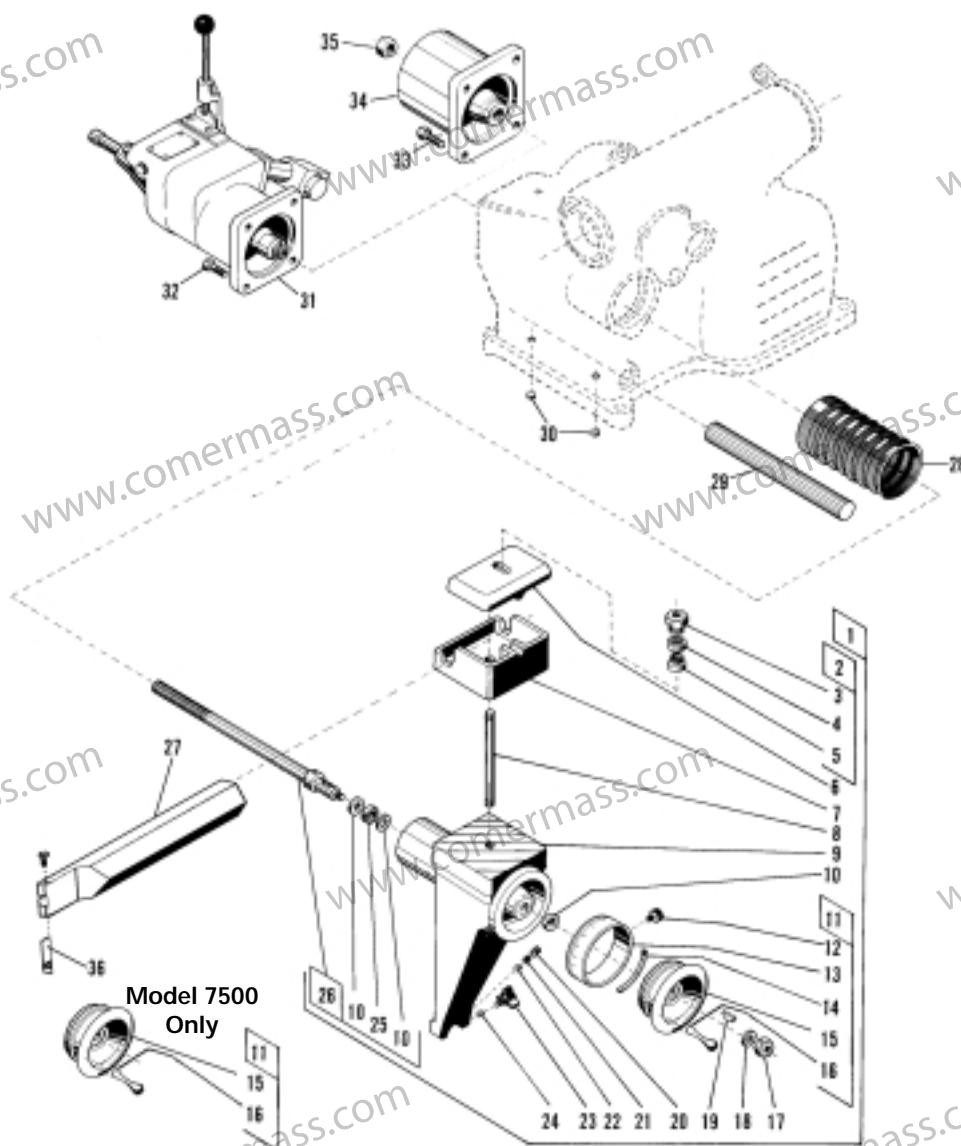
Item	Qty	Description	Item	Qty	Description
1	1	Support, Tool Bar	20	1	Bit, Carbide, Package Of 2
5	1	Bolt, T	21	1	Holder
6	1	Washer, Flat	22	1	Sleeve
7	3	Spring, Compression	23	1	Washer, Flat
8	1	Nut/Washer, Hex, Self-Align, Assy	24	1	Screw, Shoulder
9	1	Clamp Assy.	25	1	Bar, Boring
10	1	Clamp	26	1	Ring, Retaining, External
11	2	Screw, Pan Hd., Machine	27	1	Washer, Wave
12	1	Shield Assy.	28	1	Dial, Micrometer
13	2	Screw, Retainer	29	1	Rod, Dial
14	1	Bracket	30	1	Screw, Set, Cup Point
15	2	Insert, Nut	31	1	Dial, Depth
16	1	Shield	32	1	Bar, Tool, LH, Assy.
17	1	Decal, Safety	33	1	Holder
18	1	Bar, Tool, RH, Assy.	34	1	Band, Silencer, HD, Assy.
19	1	Screw, Oval Hd., Machine			

Parts Identification

Cross Feed Assembly

Models 4000, 4100 & 7500 Only

Item	Qty	Description	Item	Qty	Description
1	1	Cross Feed Assembly	14	1	Spring, Dial
2	1	Nut/Washer, Hex, Self-Align, Assy.	15	1	Handwheel
3	1	Nut, Locking	16	1	Crank, Handwheel
4	1	Retainer	20	1	Screw, Set
5	1	Washer	21	1	Spring
6	1	Clamp, Boring Bar, Upper (Except 7500)	22	1	Plug
7	1	Clamp, Boring Bar, Lower (Except 7500)	25	1	Bearing, Needle Thrust
8	1	Stud, Boring Bar	26	1	Lead Screw Assembly
9	1	Crossfeed	29	1	Bar, Guide
10	3	Race	31	1	Gearbox Assy., 4000/4100/7500
11	1	Crossfeed Handwheel Assembly	32	4	Screw, Cap 4000/4100/7500
12	1	Screw, Set	33	4	Screw, Cap 3000/7700
13	1	Dial	34	1	Cap, Lead Screw, 3000/7700
			35	1	Nut, 3000/7700



Parts Identification

Spindle—7500

Item	Qty	Description
1	1	Nut, Arbor
2	1	Arbor
4	1	Seal, Oil
5	1	Spindle And Gear Assy.
*5A	1	Spindle Gear
*5B	1	Roll Pin
6	1	Spacer
7	2	Bearing
8	1	Shim
9	1	Flange, Rear
10	6	Screw
11	1	Washer, Lock
12	1	Nut, Lock
13	1	Drawbar

